

### 3. BILL OF QUANTITY

S. #	Items	Qty	Unit	Rate	Amount
1	Low Height Partition 4'-0"  Providing and fixing in position 4'-0" height. Wooden Partition work as per drawing using partial wood frame work of 1.5 inch (thick) (24" horizontally and 18" vertically) with 16 mm MDF laminated sheets on both sides finished of approved shade and colour as shown in drawings. Provide 4" wide Aluminum skirting at the bottom of partition on both side. All exposed wood surfaces to be finished with wood polish and necessary beading of approved shades as directed including all necessary fittings/hardware and wood preservative (Termite Proofing) etc. as per list of approved material and as approved by the Engineer Incharge complete in all respects.	410	Sft	1070/- per Sft.	438700/-
2	Fully Height Partition  Providing and fixing in position full height Wooden Partition work as per drawing using partial wood frame work of 1.5 inch (thick) (24" horizontally and 18" vertically) with 16 mm MDF laminated sheets on both sides finished of approved shade and colour as shown in drawings. Provide 4" wide Aluminum skirting at the bottom of partition on both side. All exposed wood surfaces to be finished with wood polish and necessary beading of approved shades as directed including all necessary fittings/hardware and wood preservative (Termite Proofing) etc. as per list of approved material and as approved by the Engineer Incharge complete in all respects.	230	Sft	870/-	200100/-
Total					638800/-
SST 13%					83044/-
Grand Total Amount					721844/-

Grand Total Amount Rupees (in words) Seven hundred

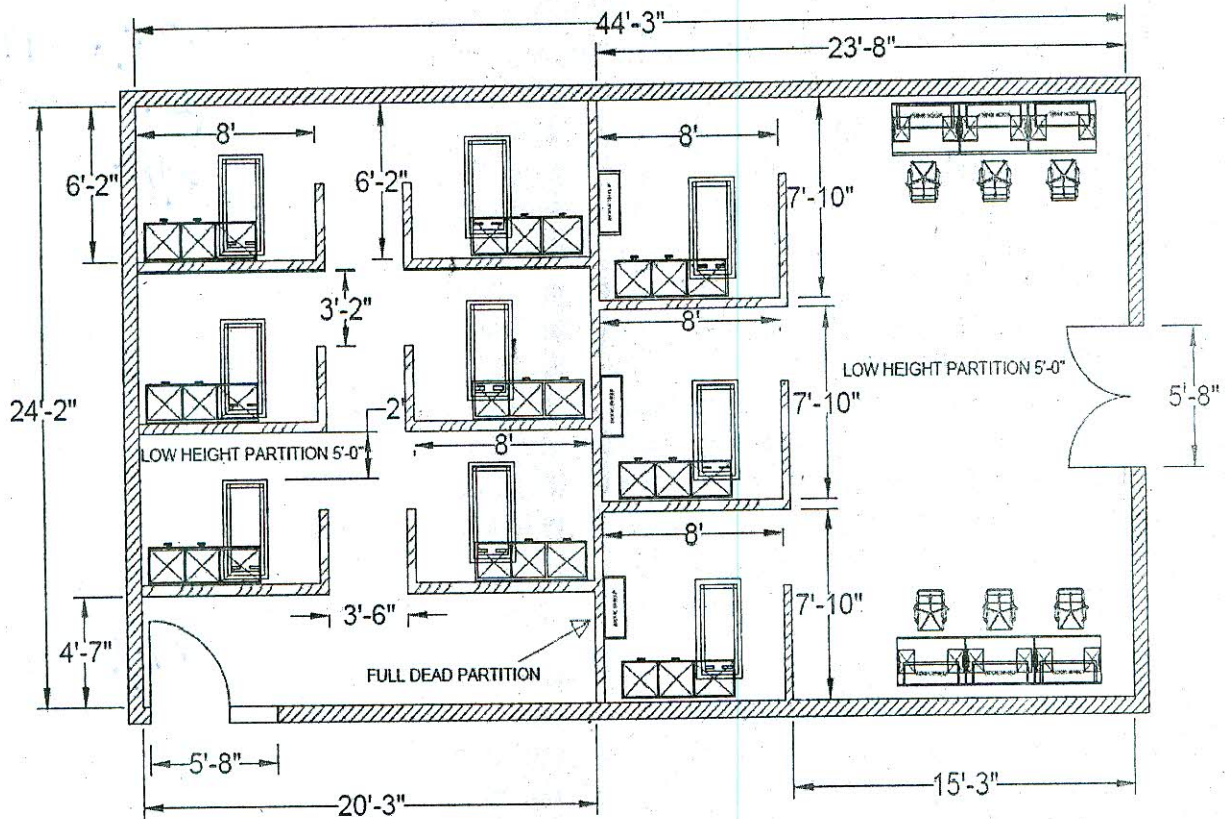
Twenty one Thousand Eight hundred forty four

M/s. Decent Furnishers  
*M. H. M.*  
Proprietor



Stamp & Signature

#### 4. DRAWING



## AMAN CED ROOM 126 LAYOUT

Mrs. Decent Furnishers  
*Mrs. Decent*  
Proprietor



Stamp & Signature